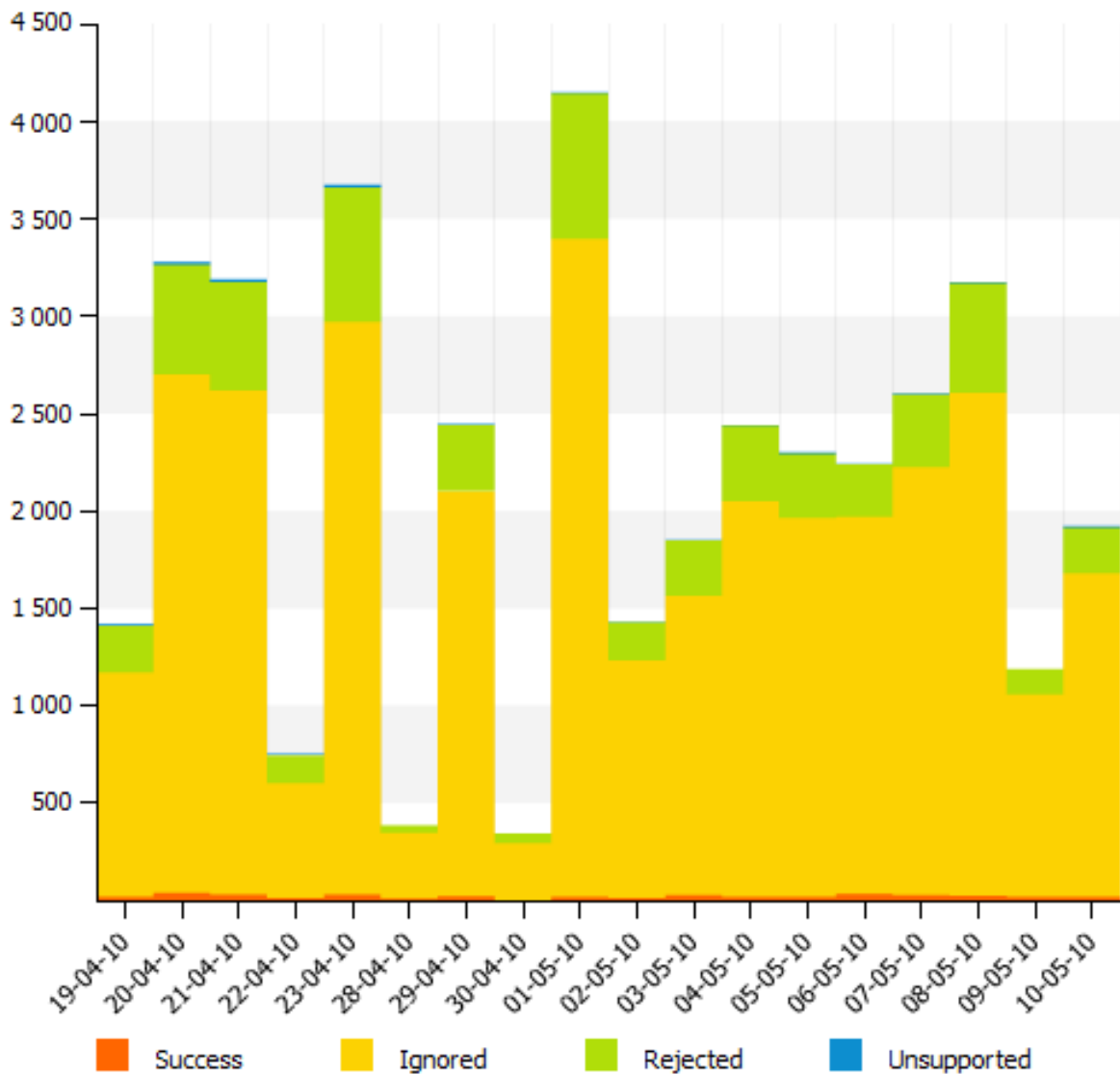


TextBlue Bluetooth Proximity Messaging Statistics

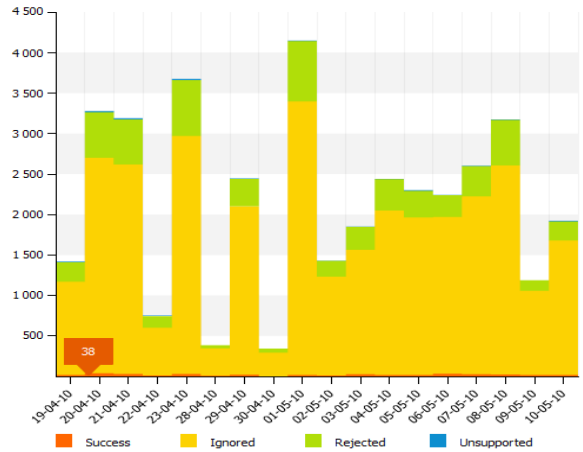
Networker:

Summary Graph – General Statistics



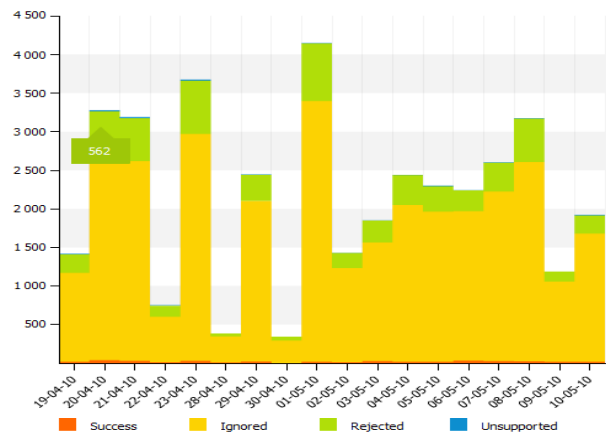
By positioning your cursor over the graph, you can see the following:

Total number of successful messages sent



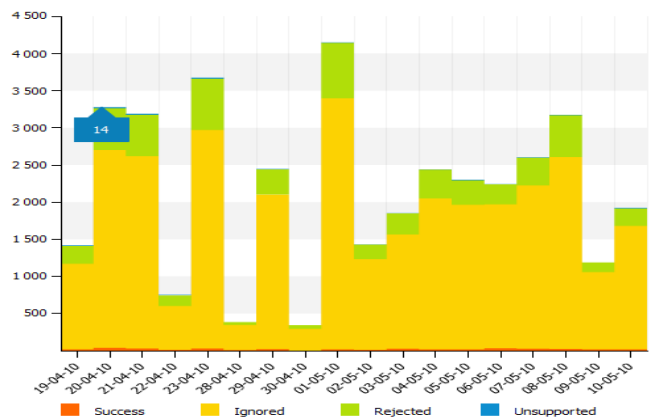
Total number of rejected messages.

(These can either be physically rejected or accepted and then the recipient has moved out of the area)

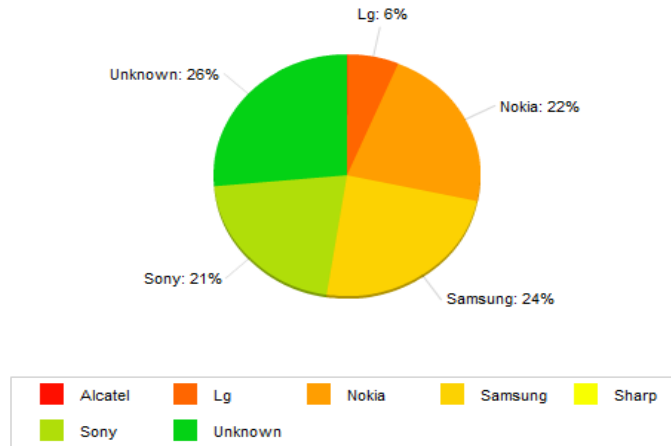


Total number of unsupported devices

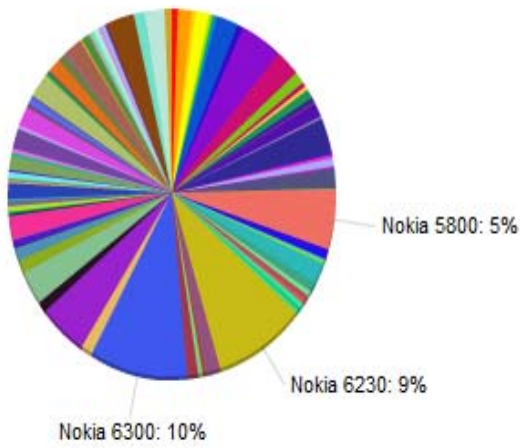
(Bluetooth headsets)



Summary Graph – Manufacturer Report



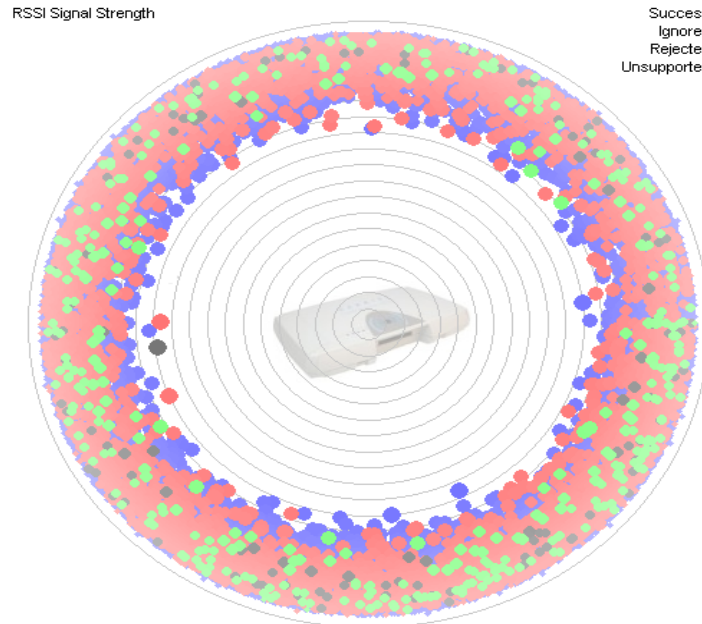
This shows a breakdown of successful messages received by manufacturer



The manufacturer statistics can be broken down further into handset type

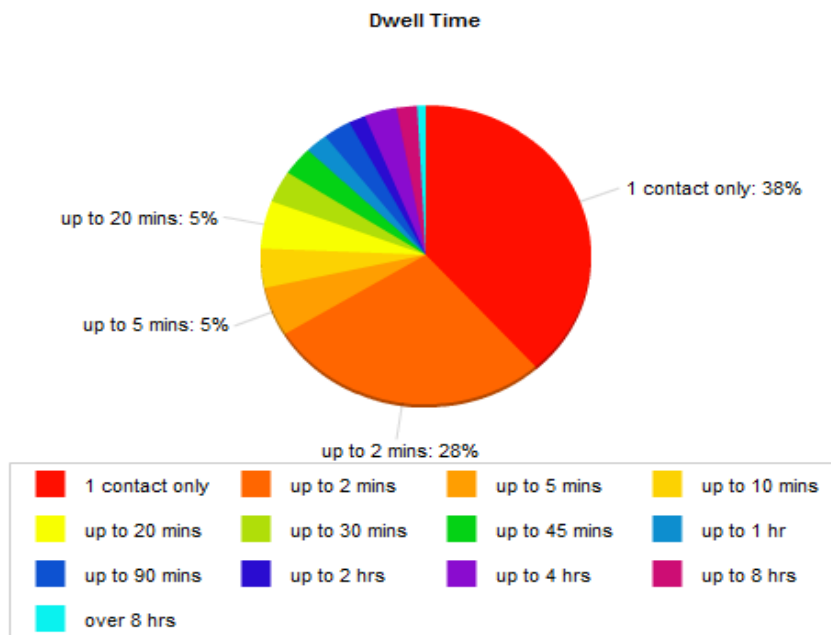


Summary Graph – Positioning Reporting



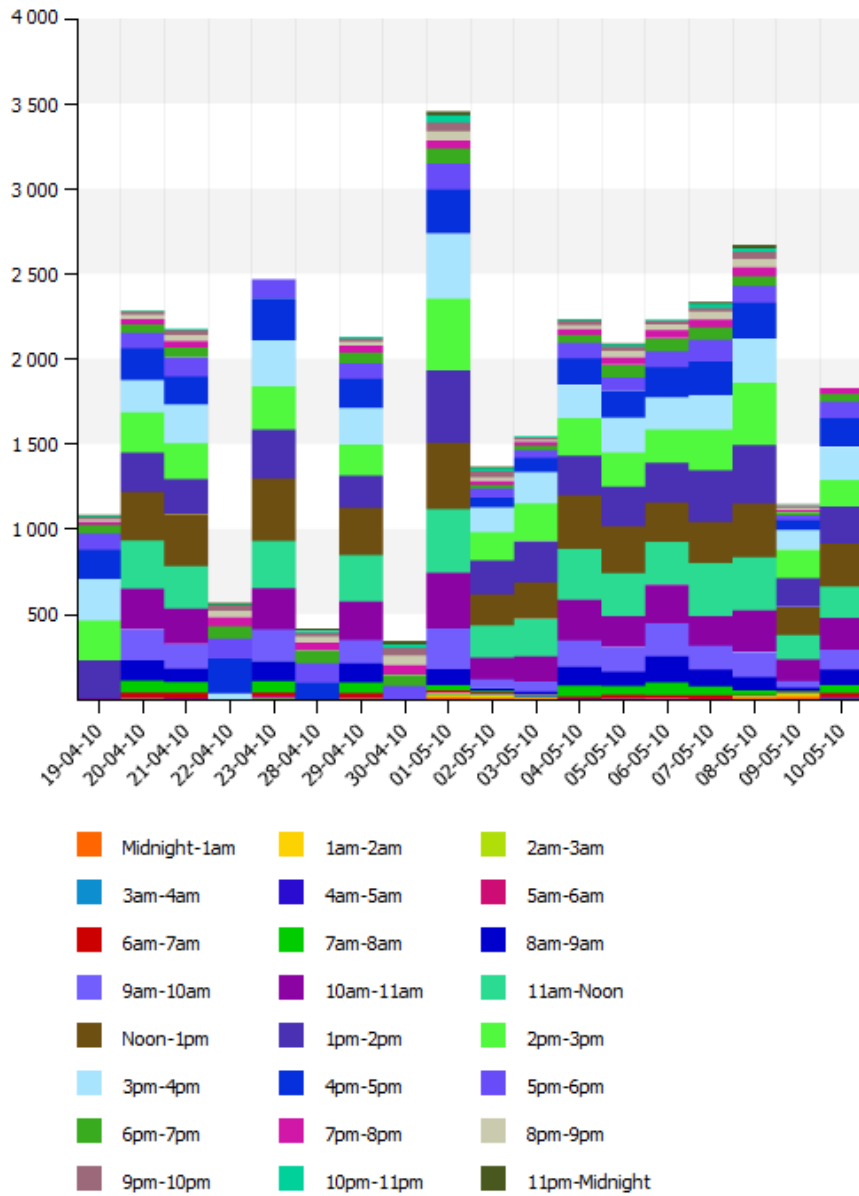
Here you can see where the devices were in relation to the Networker, when they were contacted.

Summary Graph – Dwell Time Reports



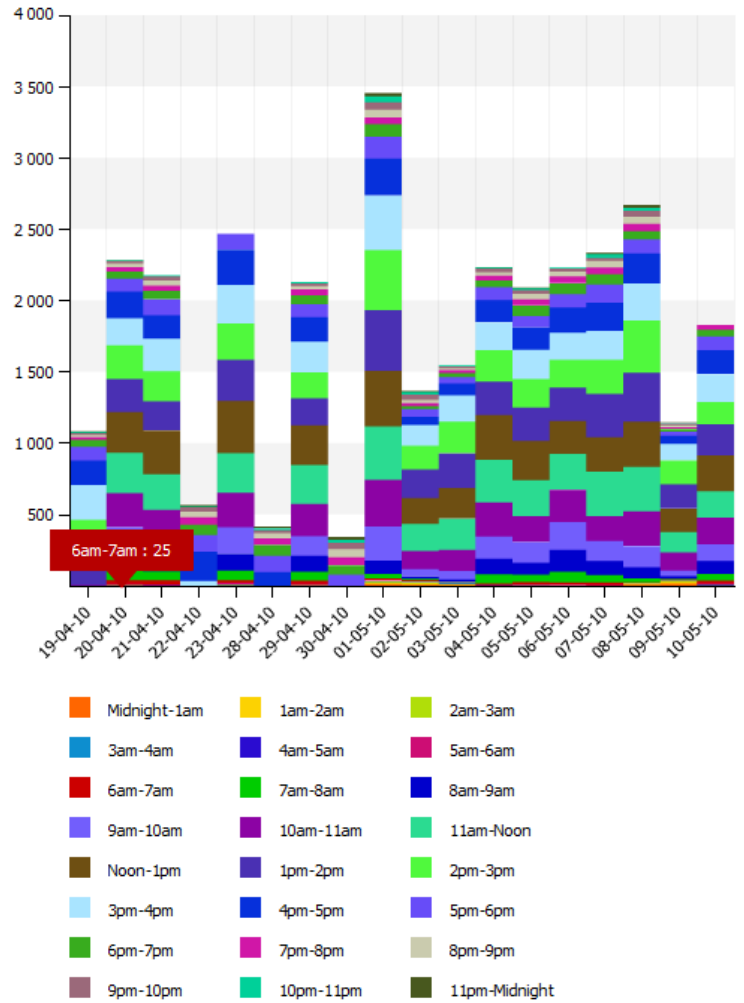
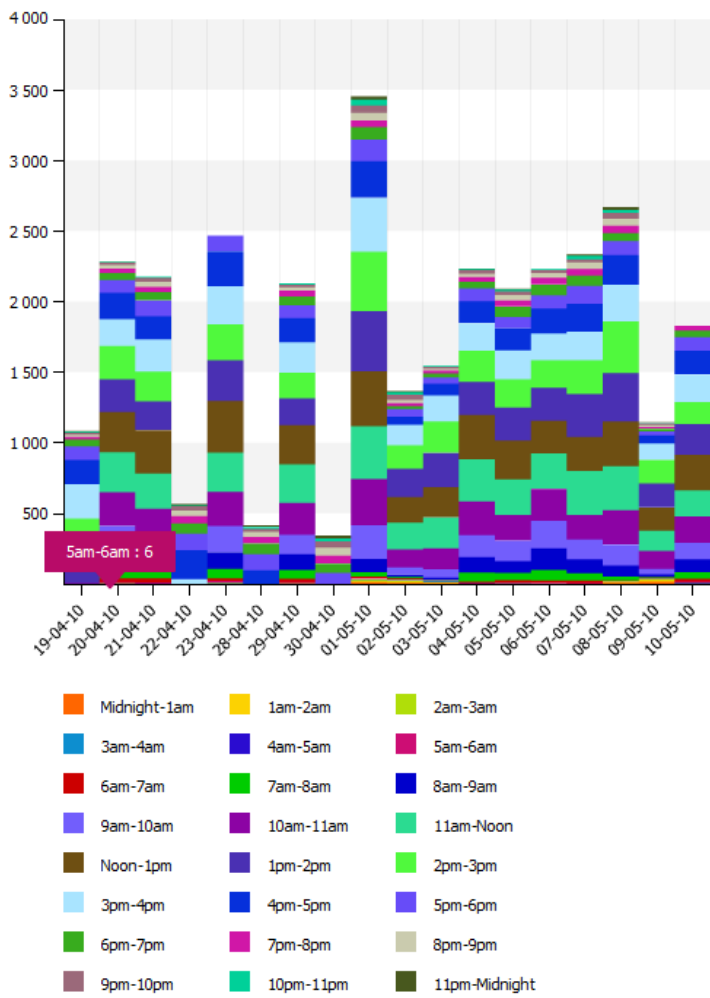
Here you can see how many times handsets were in range

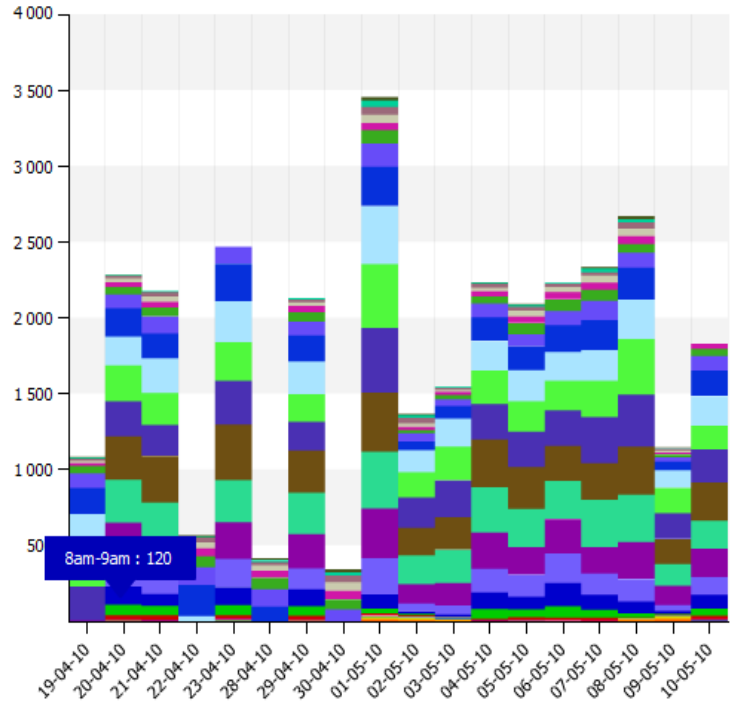
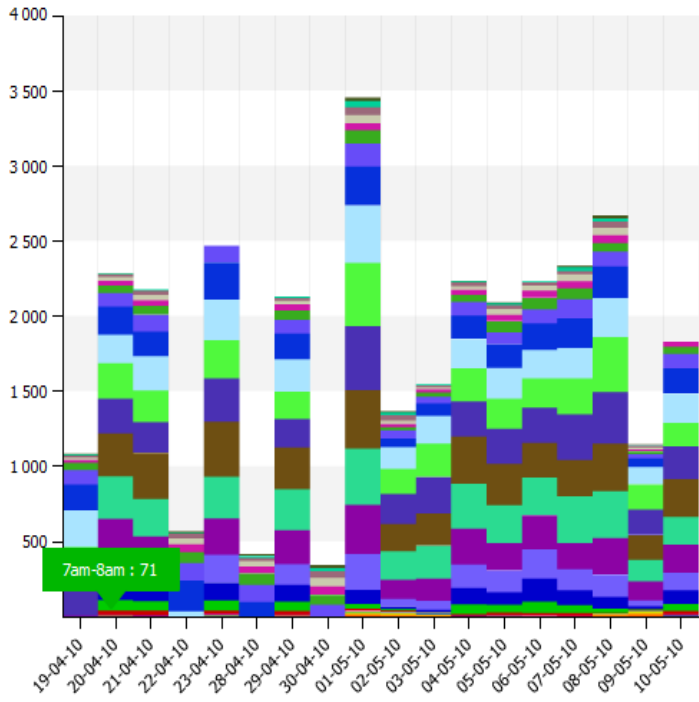
Summary Graph – Foot Fall Reports



This graph shows the total number of unique handsets in range at any given time

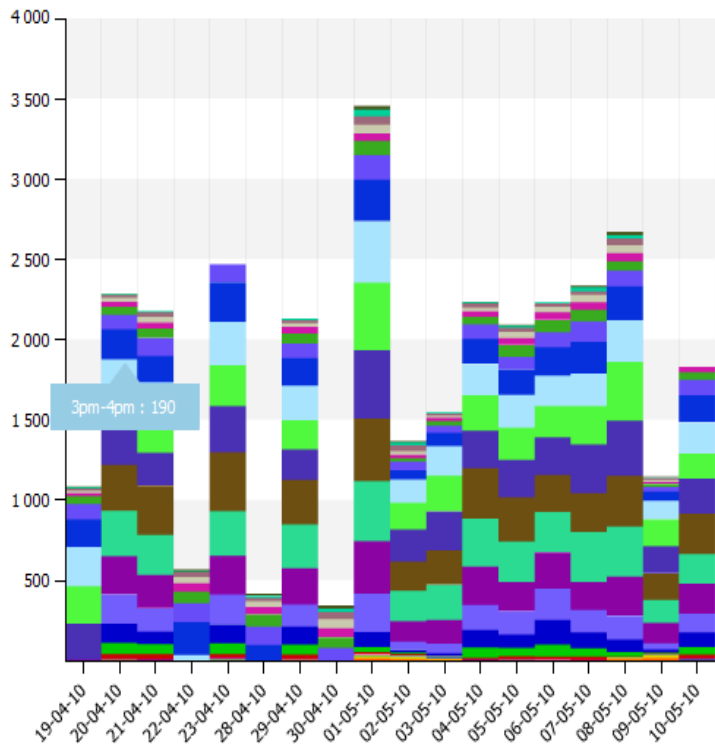
By positioning your cursor over the graph you can obtain further footfall details that have been recorded on an hourly basis:



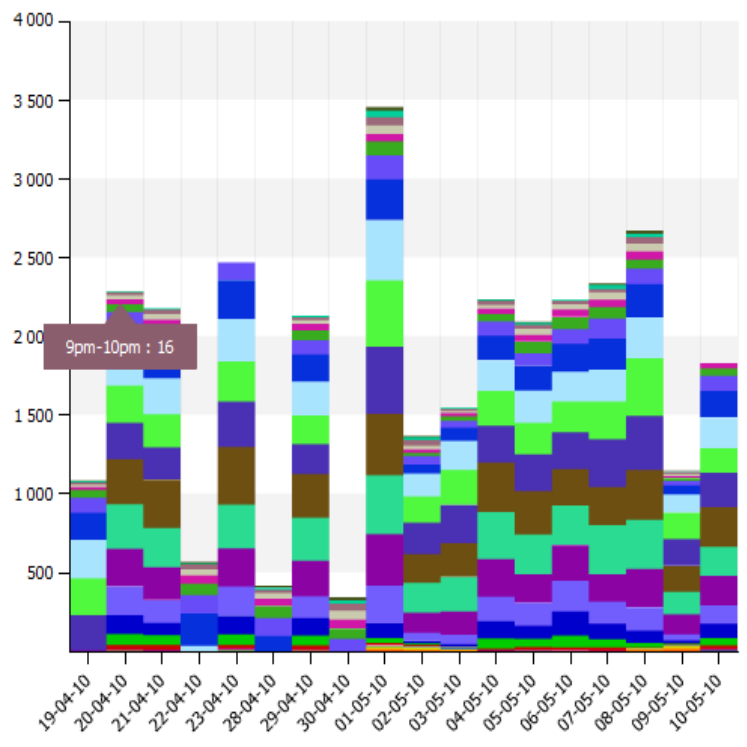


- | | | |
|--------------|-----------|---------------|
| Midnight-1am | 1am-2am | 2am-3am |
| 3am-4am | 4am-5am | 5am-6am |
| 6am-7am | 7am-8am | 8am-9am |
| 9am-10am | 10am-11am | 11am-Noon |
| Noon-1pm | 1pm-2pm | 2pm-3pm |
| 3pm-4pm | 4pm-5pm | 5pm-6pm |
| 6pm-7pm | 7pm-8pm | 8pm-9pm |
| 9pm-10pm | 10pm-11pm | 11pm-Midnight |

- | | | |
|--------------|-----------|---------------|
| Midnight-1am | 1am-2am | 2am-3am |
| 3am-4am | 4am-5am | 5am-6am |
| 6am-7am | 7am-8am | 8am-9am |
| 9am-10am | 10am-11am | 11am-Noon |
| Noon-1pm | 1pm-2pm | 2pm-3pm |
| 3pm-4pm | 4pm-5pm | 5pm-6pm |
| 6pm-7pm | 7pm-8pm | 8pm-9pm |
| 9pm-10pm | 10pm-11pm | 11pm-Midnight |



- | | | |
|--------------|-----------|---------------|
| Midnight-1am | 1am-2am | 2am-3am |
| 3am-4am | 4am-5am | 5am-6am |
| 6am-7am | 7am-8am | 8am-9am |
| 9am-10am | 10am-11am | 11am-Noon |
| Noon-1pm | 1pm-2pm | 2pm-3pm |
| 3pm-4pm | 4pm-5pm | 5pm-6pm |
| 6pm-7pm | 7pm-8pm | 8pm-9pm |
| 9pm-10pm | 10pm-11pm | 11pm-Midnight |



- | | | |
|--------------|-----------|---------------|
| Midnight-1am | 1am-2am | 2am-3am |
| 3am-4am | 4am-5am | 5am-6am |
| 6am-7am | 7am-8am | 8am-9am |
| 9am-10am | 10am-11am | 11am-Noon |
| Noon-1pm | 1pm-2pm | 2pm-3pm |
| 3pm-4pm | 4pm-5pm | 5pm-6pm |
| 6pm-7pm | 7pm-8pm | 8pm-9pm |
| 9pm-10pm | 10pm-11pm | 11pm-Midnight |